

# FOR SALE

## RESIDENTIAL - CONDOMINIUM 958SQFT (89SQM) / CALL FOR PRICE!

+65-98807158



3 - Bedroom

### TYPE C1

958 sqft | 1,168 sqft  
(Area is inclusive of Strata  
Local Area above Living &  
Dining as per dotted line)

Blk: #03-05 to #07-05

Blk: #03-12 to #07-12

### TYPE C1H

958 sqft | 1,168 sqft  
(Area is inclusive of Strata  
Local Area above Living &  
Dining as per dotted line)

Blk: #03-05

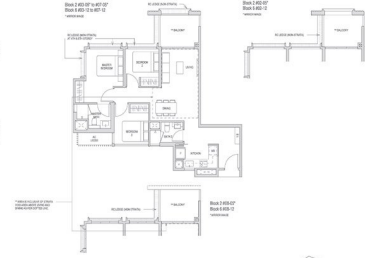
Blk: #03-12

### TYPE C1

897 sqft | 1,098 sqft

Blk: #03-05

Blk: #03-12



## RESIDENTIAL - CONDOMINIUM

2, 4, 6 RIFLE RANGE ROAD, CLEMENTI PARK, UPPER  
BUKIT TIMAH, SINGAPORE 588373

- LISTING ID: SGLD76422024
- TENURE: LEASEHOLD 99
- TITLE: N/A
- SIZE BUILT-UP: 958SQFT (89SQM)
- SITE AREA: 2.120AC (0.858HA)
- NO. OF FLOORS: 8
- FLOOR/LEVEL: N/A - N/A
- BED ROOMS: 3
- BATH ROOMS: 2
- MAIDS ROOMS: N/A
- PARKING SPACES: N/A
- LAYOUT TYPE: OTHER
- FACING: N/A
- VIEWING: N/A
- SELLING PRICE: **CALL FOR PRICE!**
- COMPLETION YEAR: 2024
- CONDITION: ORIGINAL CONDITION
- FURNISHING: PARTIALLY FURNISHED
- LISTING DATE: APR 30, 2021

## MAYFAIR MODERN

Condominium for Sale: Partially furnished. 3 bedroom, 2 bathroom. Size: 958sqft (89sqm). Completed in 2024, this unit is in original condition. Tenure: Leasehold 99. Located in Singapore's district D21 near Clementi Park, Upper Bukit Timah in the area Central West (Central region).

### INTERIOR FACILITIES

- Air-Conditioning
- Balcony

### OTHER INTERIOR FEATURES

- Cooker Hob/Hood
- Dryer
- Fridge
- Intercom

### EXTERIOR FACILITIES

- 24 Hours Security
- Clubhouse
- Covered Car Park
- Function Room

VISIT THIS PROPERTY AT: <https://projects.huttonsgroup.com/mayfair-modern/property/sgld76422024>

## HUTTONS ASIA PTE LTD

3 Bishan Place #05-01 CPF Bishan Building  
579838, Singapore

+65-98807158

sales@huttonsgroup.com

<https://projects.huttonsgroup.com/mayfair-modern>

**Huttons**  
The Agency of Choice

L3008899K



Scan QR Code