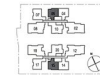




2 - Bedroom Premium

TYPE B4
#02-05
#02-15 (mirror)
64 sq m / 689 sq ft

TYPE B4-G
#01-05
#01-15 (mirror)
64 sq m / 689 sq ft

**RESIDENTIAL - CONDOMINIUM**

THE ESSENCE, 1, CHONG KUO ROAD, SINGAPORE 779830

■ LISTING ID:	SGLD70549095
■ TENURE:	LEASEHOLD 99
■ TITLE:	N/A
■ SIZE BUILT-UP:	689SQFT (64SQM)
■ SITE AREA:	46,092SQFT (4,282SQM)
■ NO. OF FLOORS:	5
■ FLOOR/LEVEL:	N/A - N/A
■ BED ROOMS:	2
■ BATH ROOMS:	2
■ MAIDS ROOMS:	N/A
■ PARKING SPACES:	N/A
■ LAYOUT TYPE:	INTERMEDIATE
■ FACING:	N/A
■ VIEWING:	N/A
■ SELLING PRICE:	CALL FOR PRICE!
■ COMPLETION YEAR:	2021, 0YRS
■ CONDITION:	ORIGINAL CONDITION
■ FURNISHING:	PARTIALLY FURNISHED
■ LISTING DATE:	MAY 7, 2021

THE ESSENCE

Condominium for Sale: Unit Type B4. 2 Bedroom Premium, 2 bathroom . TOP 2021, this unit is in original condition. Tenure: Leasehold 99 Located in Singapore's district D26 near Mandai, Upper Thomson in the area North (North region).

INTERIOR FACILITIES

- Air-Conditioning
- Fiber-Internet
- Balcony

OTHER INTERIOR FEATURES

- Cooker Hob/Hood
- Fridge
- Dryer
- Intercom

EXTERIOR FACILITIES

- 24 Hours Security
- Pool Deck
- Covered Car Park
- Pavilion

VISIT THIS PROPERTY AT: <https://projects.huttonsgroup.com/the-essence/property/sgld70549095>

HUTTONS ASIA PTE LTD

📍 3 Bishan Place #05-01 CPF Bishan Building
579838, Singapore

📞 +65-62530030

✉ sales@huttonsgroup.com

🌐 <https://projects.huttonsgroup.com/the-essence>

Huttons
The Agency of Choice

L3008899K

QR Code found on
Scan QR Code