

FOR SALE

COMMERCIAL - FACTORY (B2) 1,776SQFT (165SQM) / CALL FOR PRICE!

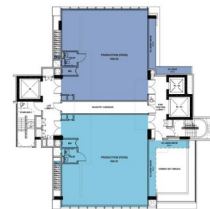
+65-98577618



Food Production

8TH STOREY

C 165 sqm | 1,776 sqft
C1 164 sqm | 1,766 sqft



UNIT NUMBER	AREA	PRICE
801-01A	165	1,776
801-01B	164	1,766

© 2023 Huttons Asia Pte Ltd

COMMERCIAL - FACTORY (B2) 33, KIM CHUAN DRIVE, SINGAPORE 537087

- LISTING ID: SGLD67790082
- TENURE: FREEHOLD
- TITLE: N/A
- SIZE BUILT-UP: 1,776SQFT (165SQM)
- SIZE LAND: 15,234SQFT (1,415SQM)
- NO. OF FLOORS: 9
- FLOOR/LEVEL: 8 - HIGH FLOOR
- PARKING SPACES: N/A
- LAYOUT TYPE: REGULAR
- FACING: N/A
- VIEWING: OTHER
- SELLING PRICE: **CALL FOR PRICE!**
- COMPLETION YEAR: 2023
- CONDITION: ORIGINAL CONDITION
- LISTING DATE: MAR 30, 2020

CITRINE FOODLAND @ 33 KIM CHUAN

INTERIOR FACILITIES

- Air-Conditioning
- Roof Terrace

EXTERIOR FACILITIES

- 24 Hours Security
- Covered Car Park
- Dining / Restaurant

VISIT THIS PROPERTY AT: <https://projects.huttonsgroup.com/citrine-foodland/property/sgld67790082>

HUTTONS ASIA PTE LTD

3 Bishan Place #05-01 CPF Bishan Building
579838, Singapore

+65-98577618

sales@huttonsgroup.com

<https://projects.huttonsgroup.com/citrine-foodland>

Huttons
The Agency of Choice

L3008899K



Scan QR Code