

FOR SALE

RESIDENTIAL - CONDOMINIUM 1,066SQFT (99SQM) / CALL FOR PRICE!

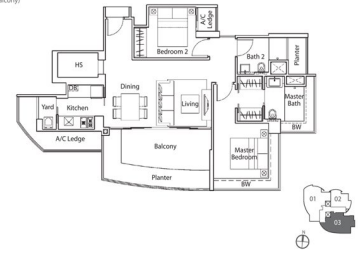
+65-94884490



2 - Bedroom

Type B

Unit #03-03 to #22-03
Area: 1066sqft / 99sqm
(inclusive of planter, a/c ledge & balcony)



RESIDENTIAL - CONDOMINIUM

LUCIDA, 2, SUFFOLK ROAD, NEWTON, NOVENA, SINGAPORE 307780

- LISTING ID: SGLD56907347
- TENURE: FREEHOLD
- TITLE: N/A
- SIZE BUILT-UP: 1,066SQFT (99SQM)
- SITE AREA: 20,383SQFT (1,894SQM)
- NO. OF FLOORS: 29
- FLOOR/LEVEL: N/A - MIDDLE FLOOR
- BED ROOMS: 2
- BATH ROOMS: 2
- MAIDS ROOMS: N/A
- PARKING SPACES: N/A
- LAYOUT TYPE: REGULAR
- FACING: N/A
- VIEWING: OTHER
- SELLING PRICE: **CALL FOR PRICE!**
- COMPLETION YEAR: 2012, 7YRS
- CONDITION: ORIGINAL CONDITION
- FURNISHING: PARTIALLY FURNISHED
- LISTING DATE: JUL 24, 2019

LUCIDA

Spacious 1,066sqft (99sqm), partially furnished, 2 bedroom, 2 bathroom Condominium for Sale. Completed in 2012, this middle floor unit is in original condition. Others: Freehold This property is currently vacant and ready to move in. Located in Singapore's district D11 near Newton, Novena in the area Newton (Central region).

INTERIOR AND FEATURES

- Air-Conditioning
- Balcony

FACILITIES

- Cooker Hob/Hood
- Dishwasher
- Fridge
- Intercom

AMENITIES

- 24 Hours Security
- Covered Car Park
- Jacuzzi
- Landscaped Garden

VISIT THIS PROPERTY AT: <https://projects.huttonsgroup.com/lucida/property/sgld56907347>

HUTTONS ASIA PTE LTD

3 Bishan Place #05-01 CPF Bishan Building
579838, Singapore

+65-94884490

sales@huttonsgroup.com

<https://projects.huttonsgroup.com/lucida>

Huttons
The Agency of Choice

L3008899K



Scan QR Code