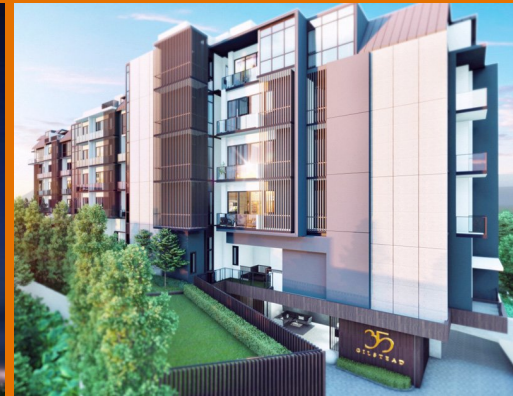


# FOR SALE

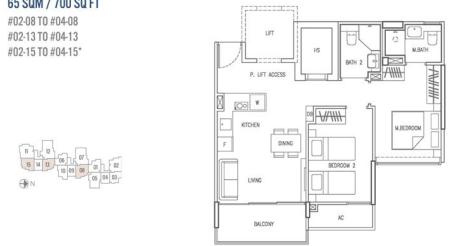
## RESIDENTIAL - CONDOMINIUM 700SQFT (65SQM) / CALL FOR PRICE!

+65-92702727



2 - Bedroom

TYPE B1  
65 SQM / 700 SQ FT  
#02-08 TO #04-08  
#02-13 TO #04-13  
#02-15 TO #04-15\*



### RESIDENTIAL - CONDOMINIUM

35, GILSTEAD ROAD, NEWTON, NOVENA,  
SINGAPORE 309079

- LISTING ID: SGLD30340647
- TENURE: FREEHOLD
- TITLE: N/A
- SIZE BUILT-UP: 700SQFT (65SQM)
- SITE AREA: 38,086SQFT (3,538SQM)
- NO. OF FLOORS: 5
- FLOOR/LEVEL: N/A - MIDDLE FLOOR
- BED ROOMS: 2
- BATH ROOMS: 2
- MAIDS ROOMS: N/A
- PARKING SPACES: N/A
- LAYOUT TYPE: OTHER
- FACING: N/A
- VIEWING: OTHER
- SELLING PRICE: **CALL FOR PRICE!**
- COMPLETION YEAR: 2023
- CONDITION: ORIGINAL CONDITION
- FURNISHING: PARTIALLY FURNISHED
- LISTING DATE: APR 30, 2021

### 35 GILSTEAD

Partially furnished, 2 bedroom, 2 bathroom Condominium for Sale. Completed in 2023, this middle floor unit is in original condition. Others: Freehold Located in Singapore's district D11 near Newton, Novena in the area Newton (Central region).

#### INTERIOR FACILITIES

- Air-Conditioning
- Balcony

#### OTHER INTERIOR FEATURES

- Cooker Hob/Hood
- Fridge
- Oven / Microwave
- Washing Machine

#### EXTERIOR FACILITIES

- 24 Hours Security
- Covered Car Park
- Landscaped Garden
- Wading Pool

VISIT THIS PROPERTY AT: <https://projects.huttonsgroup.com/35gilstead/property/sgld30340647>

### HUTTONS ASIA PTE LTD

3 Bishan Place #05-01 CPF Bishan Building  
579838, Singapore

+65-92702727

sales@huttonsgroup.com

<https://projects.huttonsgroup.com/35gilstead>



L3008899K



Scan QR Code