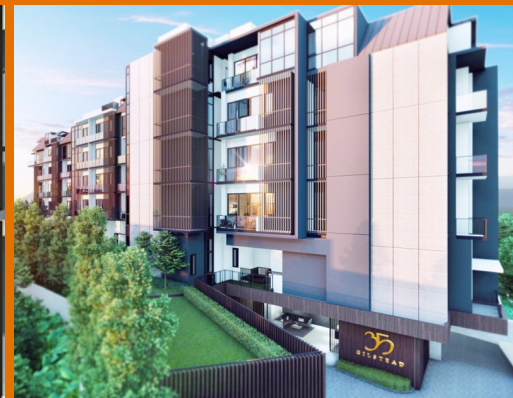


# FOR SALE

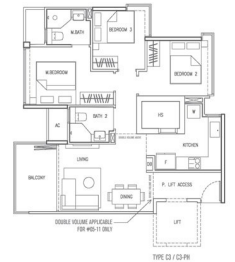
## RESIDENTIAL - CONDOMINIUM 1,033SQFT (96SQM) / CALL FOR PRICE!

+65-92702727



3 - Bedroom Classic DV

TYPE C3-PH  
96 SQM / 1,033 SQ FT  
#05-11



TYPE C3 / C3-PH

### RESIDENTIAL - CONDOMINIUM

35, GILSTEAD ROAD, NEWTON, NOVENA,  
SINGAPORE 309079

- LISTING ID: SGLD08491457
- TENURE: FREEHOLD
- TITLE: N/A
- SIZE BUILT-UP: 1,033SQFT (96SQM)
- SITE AREA: 38,086SQFT (3,538SQM)
- NO. OF FLOORS: 5
- FLOOR/LEVEL: N/A - HIGH FLOOR
- BED ROOMS: 3
- BATH ROOMS: 2
- MAIDS ROOMS: N/A
- PARKING SPACES: N/A
- LAYOUT TYPE: CORNER
- FACING: N/A
- VIEWING: OTHER
- SELLING PRICE: **CALL FOR PRICE!**
- COMPLETION YEAR: 2023
- CONDITION: ORIGINAL CONDITION
- FURNISHING: PARTIALLY FURNISHED
- LISTING DATE: APR 30, 2021

### 35 GILSTEAD

Spacious 1,033sqft (96sqm), partially furnished, 3 bedroom, 2 bathroom Condominium for Sale. Completed in 2023, this high floor corner unit is in original condition. Others: Freehold Located in Singapore's district D11 near Newton, Novena in the area Newton (Central region).

#### INTERIOR FACILITIES

- Air-Conditioning
- Balcony

#### OTHER INTERIOR FEATURES

- Cooker Hob/Hood
- Fridge
- Oven / Microwave
- Washing Machine

#### EXTERIOR FACILITIES

- 24 Hours Security
- Covered Car Park
- Landscaped Garden
- Wading Pool

VISIT THIS PROPERTY AT: <https://projects.huttonsgroup.com/35gilstead/property/sgld08491457>

### HUTTONS ASIA PTE LTD

3 Bishan Place #05-01 CPF Bishan Building  
579838, Singapore

+65-92702727

sales@huttonsgroup.com

<https://projects.huttonsgroup.com/35gilstead>

**Huttons**<sup>®</sup>

The Agency of Choice

L3008899K



Scan QR Code