







RARELY DOES A RESIDENCE ENCAPSULATE SO MANY EXPERIENCES  
IN ONE REALM. A MULTITUDE OF EXQUISITE AMENITIES AND  
ACTIVITIES THAT OFFER AN EXCEPTIONAL EXPERIENCE FOR  
THOSE ENDOWED TO ACQUIRE THIS EXTRAORDINARY ADDRESS –  
FIVE SHENTON WAY. ENTHRALLING. INTRIGUING. EXCITING.

WELCOME TO V ON SHENTON.

## THE GRANDEUR OF THE PAST

Known famously as Singapore's Wall Street, Shenton Way proudly holds the financial and trading history of Singapore.

It was not until the 1960's that the first buildings appeared along Shenton Way. The first being the Conference Hall and Trade Union House (1965), later becoming the Singapore Conference Hall, and the ICB Building (1968) and Shing Kwan House which is now the SGX Centre. Also of significance to the area in the 1970s were Robina House, Shenton House and of course, UIC Building.

Standing at 152m tall, and 39 storeys high, UIC Building at five Shenton Way was the tallest of the 'three sisters' on the south side of Shenton Way. Robina House and Shenton House make up the other two.



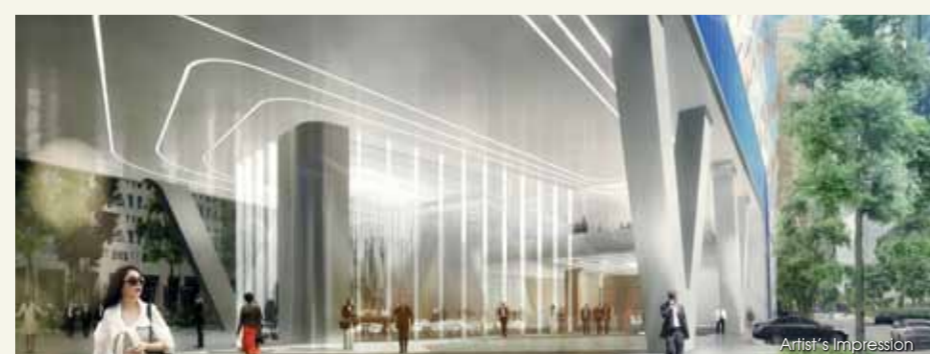
## A BREATH OF FRESH AIR ON SINGAPORE'S WALL STREET

An address with a glorious legacy, the former UIC Building located at five Shenton Way dominated the city skyline as Singapore's tallest building for many years since its completion in 1973.

Today, the area is undergoing rejuvenation and transformation with the completion of several notable projects including One Raffles Quay, Marina Bay Financial Centre and Asia Square.

Five Shenton Way will once again be positioned in the new financial heart of Singapore. A spectacular twin tower comprising a 23-storey office building and a 54-storey residential tower, V on Shenton, will rise from the monolithic sheen of the central business district.

V on Shenton harmonises habitat and nature into a magnificent column of light, space and greenery. Using its signature organic shapes and structures inspired by nature herself, the building cultivates the sense of a sculpture that has been crafted by artisan hands to deliver the most appealing qualities of next generation metropolitan living.



### Honeycomb Principle

Nature's most efficient cell for strength, the hexagon shape dominates the design of V on Shenton. These organic geometric panels also weave texture and cohesion to the development, reflecting light and pocketing shade. As you move around the building, the effect is a structure that is alive and constantly changing.



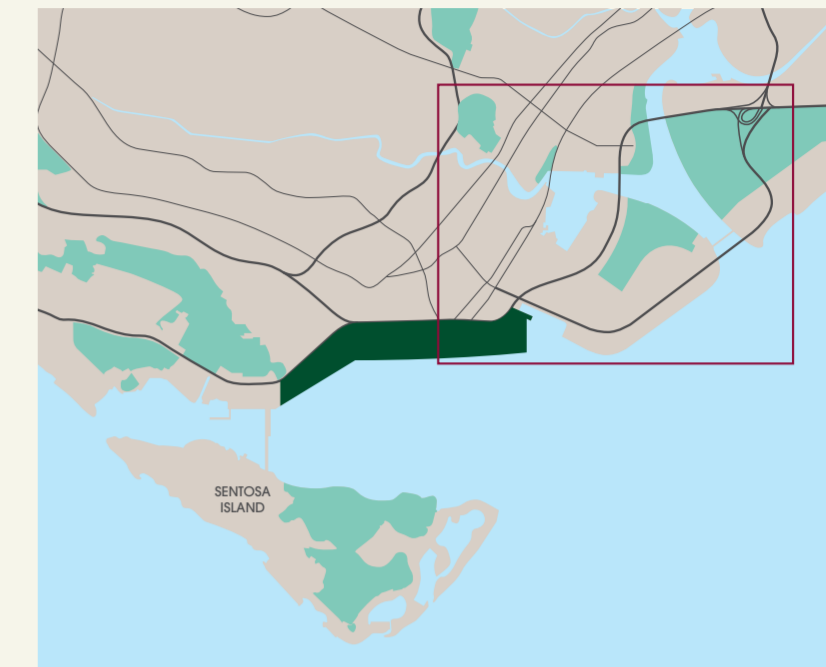
Artist's Impression

## A WORLD-CLASS WONDERLAND IN YOUR BACKYARD

Von Shenton has fun and entertainment on tap, night and day. The development enjoys close proximity to the constantly evolving artistic heart of Singapore's diverse cultural and entertainment quarters. A number of first-class attractions are right in your backyard. From the favoured to the fashionable, your glamorous roster of neighbours includes the Singapore Flyer, the Esplanade Park, the Chinatown Heritage Area, Gardens by the Bay and, of course, the entire round-the-clock Marina Bay Waterfront playground.



The bustling Tanjong Pagar enclave. Slated to be the new Waterfront City.



## CENTRE OF IT ALL, MINUTES FROM EVERYWHERE

The ideal base for exceptional world-class city living, V on Shenton sits right on the pulse of Singapore's new Marina Bay Financial District. It is within the opportunity corridor of Asia's multi-million dollar waterfront city - Downtown at Marina Bay. Other distinguished neighbours include the new Westin Hotel (operational in 2013), Marina Bay Sands, Marina Bay Cruise Centre and Gardens by the Bay.

V on Shenton will have direct underground link to Marina Bay Link Mall and the upcoming Downtown MRT Station, which is slated for completion in 2013.

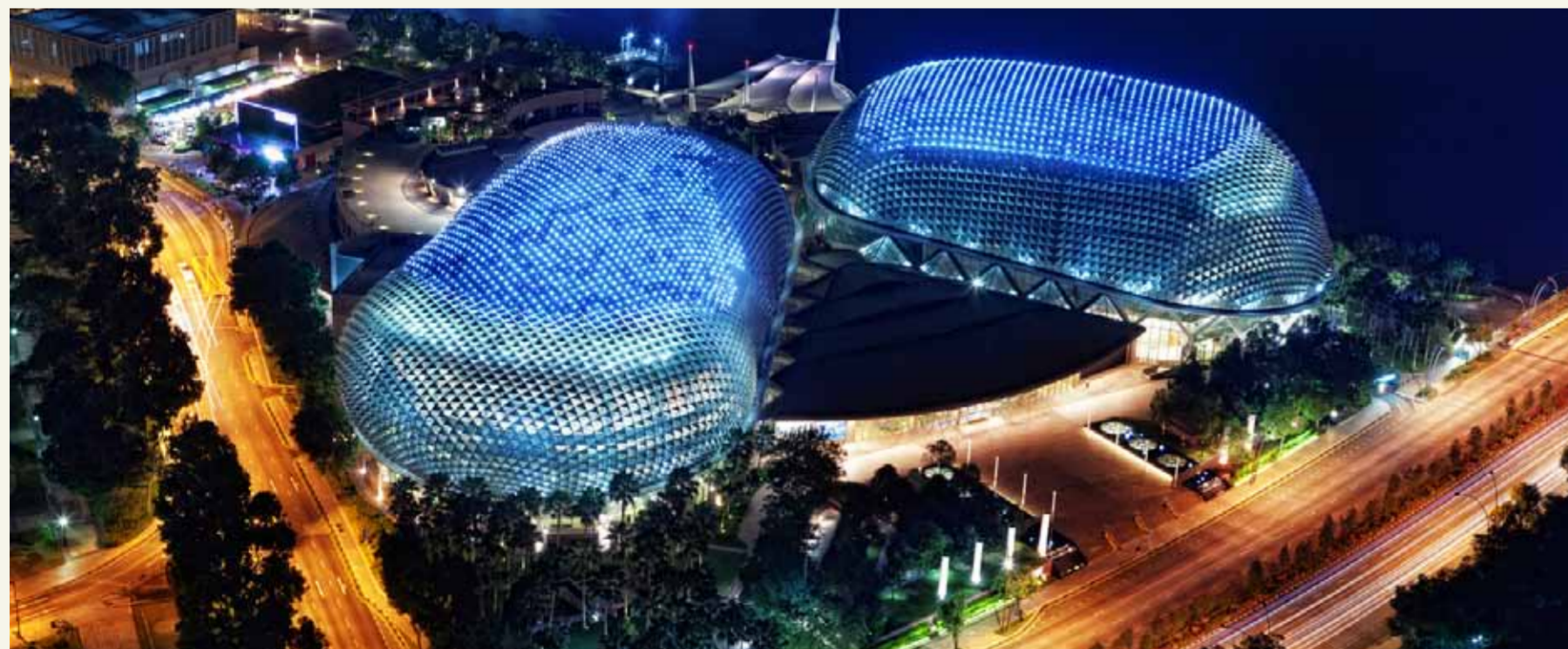
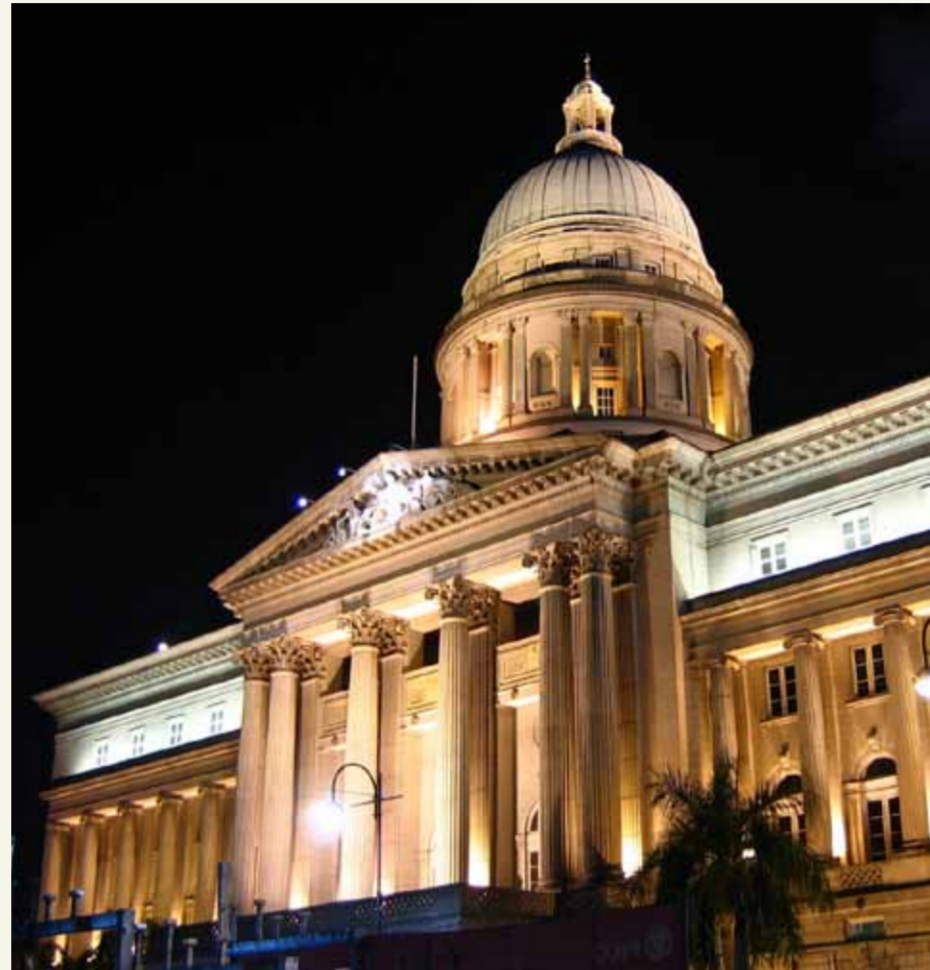
The Raffles Place MRT Interchange Station, that serves all corners of Singapore, as well as the Tanjong Pagar MRT Station, are all within walking distance.

Central Expressway (CTE), East Coast Parkway (ECP) and the emerging Marina Coastal Expressway (MCE), targeted for completion in 2013, offer seamless connectivity throughout the island.

Not to scale  
Artist's Impression



SIGHTS AND SOUNDS  
TO ENRICH YOUR SOUL.



## PULSATING METROPOLIS AT YOUR DOORSTEP

Step out and step into the heart of Singapore's cosmopolitan high life. Feel the pulse of entertainment and music as world-class arts, musicals, museums await your patronage. And while you are at it, indulge in gastronomic delights concocted by some of the world's finest chefs. All this and more at an address that few can rival.



## WHERE THE WORLD COMES ALIVE

Be the first to own a piece of living legacy. From legendary landmarks and events that command the global stage to first-in-the-world icons, only one enclave invokes such greatness. Indeed, it's all unfolding before your eyes at this exclusive address, in a city unlike any other.

INTIMATE SPACES  
FOR ELEGANT LIVING.



Artist's Impression

## REDEFINING METROPOLITAN LIVING

Only the finest quality designs and materials are chosen to parallel the style and elegance V on Shenton commands. World-renowned brands adorn your spaces, endowing you with luxury at every turn.



## RETREAT INTO QUIET SPLENDOUR

Nothing compares to this elegant sanctum purposed for your distinguished lifestyle. Fixtures and furnishing marry practicality and panache in a space that invigorates and inspires at every turn. Come on in: Your private world awaits.



Artist's Impression

## WHERE TRANQUILITY PREVAILS

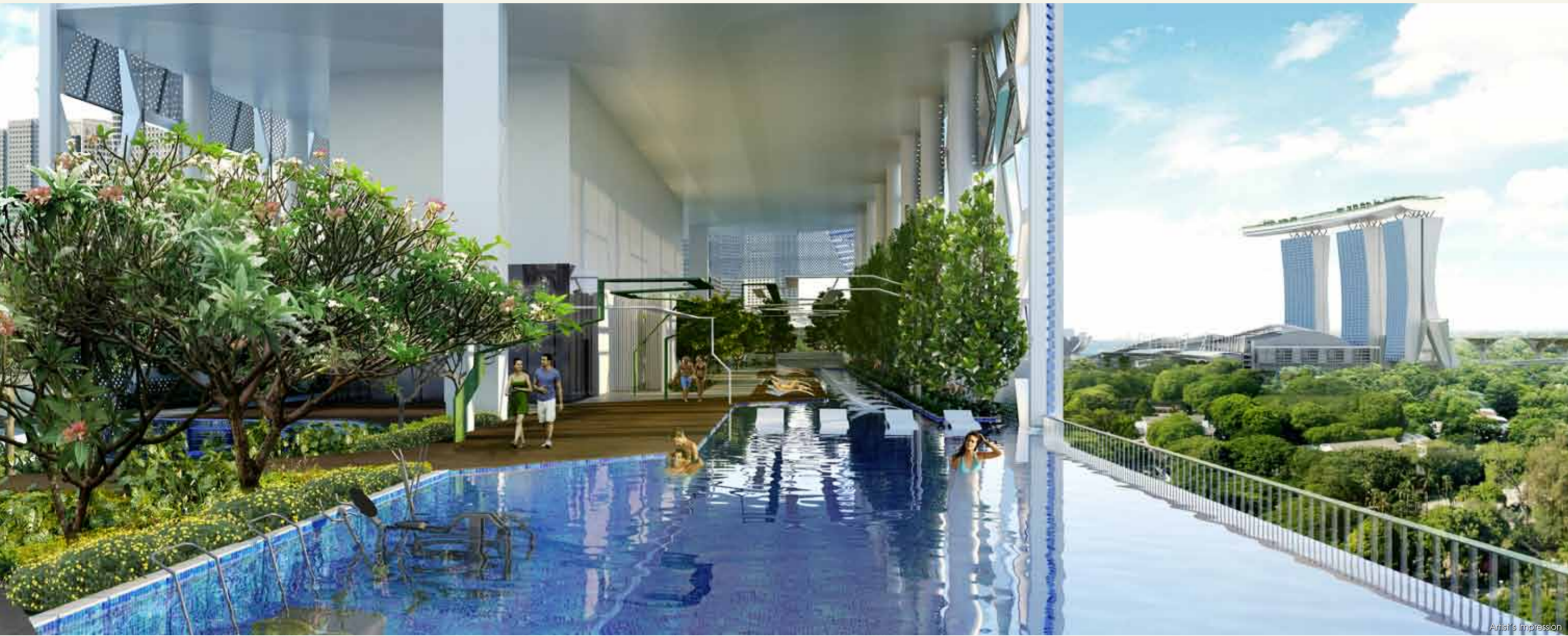
There's nothing quite like waking up to a stunning blue vista that meets the horizon, or being serenaded by gentle ocean waves. Rest comes easy in perfect serenity.



Artist's Impression

REVOLUTIONARY LIVING,  
ABOVE IT ALL.





## 3 LUSH SKY GARDENS AND A GYMNASIUM; FOR SUN, SOUL AND SANCTUARY

V on Shenton promotes harmony from its facade design to its interior core. And nowhere is this philosophy more palpable than on its three dedicated levels of verdant Sky Gardens and sea-facing gymnasium on Level 35.

Each sky garden level is dedicated to satisfying every individual's desire to relax, have a good workout, entertain guests, or simply get away from it all. One can enjoy sweeping views of the city below, featuring well-appointed furnishings and amenities as well as an enticing medley of convivial spaces and intimate nooks.

### LUXURI8 (Level 8)

Step into a slice of heaven closest to the ground. Luxuri8 lets you throw your worldly cares to the wind as you soak in the sun, do your laps in the pool or while away the hours engaged in one of the many activity corners. There's a surprise at every turn, for the very young and the young at heart.



#### LEGEND

- |                  |                |                    |
|------------------|----------------|--------------------|
| 1. Outback Grill | 6. Junior Pool | 11. Playscape      |
| 2. Tanning Isles | 7. Pool        | 12. Cloves Hedge   |
| 3. Sun Deck      | 8. Aqua Gym    | 13. Cinnamon Scent |
| 4. Club Lounge   | 9. Spa Pool    | 14. Nutmeg Grove   |
| 5. Splash Zone   | 10. Bubbly Bay | 15. Spice Botanics |

## EPICURE (Level 24)

All the best ingredients for entertaining, outdoor dining and nourishment for the soul, come together on this unique Epicure level. Created in collaboration with Culinary Consultant and Chef, Ryan Hong, the buffet spread of dining options, kitchen choices and seating combinations is purely delectable. Featuring fresh ideas in outdoor design, and furnishings handpicked from the best, every table at Epicure comes with captivating views of the city and sea.



### LEGEND

- |                     |                   |
|---------------------|-------------------|
| 1. Epicurean Dining | 4. Private Lounge |
| 2. Island Kitchen   | 5. Garden Lounge  |
| 3. Outback Dining   | 6. Relax Pods     |



### CHEF RYAN HONG Culinary Consultant

Adding his culinary expertise to Epicure is Chef Ryan Hong, TV personality, private chef and culinary consultant. He is instrumental in envisioning subtle culinary delights such as choices of materials for worktop, appliances and cutlery. Let his infectious passion and skilful enthusiasm take you on a gourmet adventure right at your very own residence.

## HAVEN ON 34 (Level 34)

Steal away for a rendezvous with tranquility in the clouds. Haven on 34 is more than a Sky Garden, it is an oasis of calm and peace carved right out of the clear blue sky. Here, you will find many ways to escape the world. Suspend time at the cosy lounges, let the breeze lull you to sleep on the swivelling day beds and let the tinkling sound of water bring focus and energy back into your day. While away your time at Haven on 34 as you relax mind, body and soul.



### LEGEND

- |                    |                    |
|--------------------|--------------------|
| 1. Putting Green   | 6. Beanwaves       |
| 2. Reading Oasis   | 7. Swivel Day Beds |
| 3. Surf Lounge     | 8. Refreshment Bar |
| 4. Day Bed Island  | 9. Laundromat      |
| 5. Outdoor Fitness |                    |



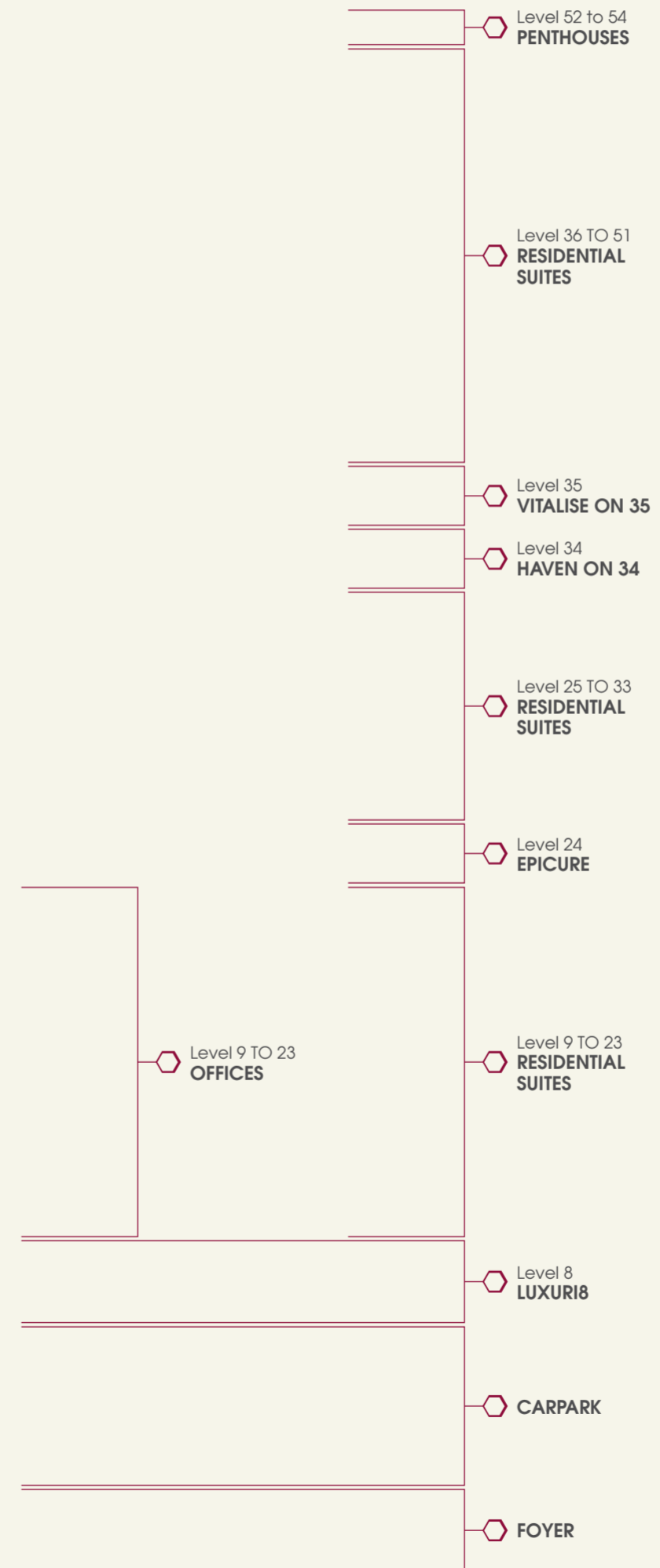
## VITALISE ON 35 (Level 35)

Get yourself into tiptop shape effortlessly, with your mind focused on the breathtaking sea views before you. This spectacular gymnasium in the sky features a magnificent floor-to-ceiling picture window offering a feast for your eyes as you work out. A selection of workout stations including a cardio area lets you exercise your options as well as all your muscle groups.





Artist's Impression



## VITALITY AND VIRTUOSITY ON SHENTON

V on Shenton is shaping up vividly in the new financial heart of Singapore. Add to that world-class entertainment and the glitterati of the Marina Bay enclave. V on Shenton will become the most desirable address, more than city living, it is living in the net millennia, a future vision of our city.

## A COLLECTIVE AND CREATIVE COLLABORATION

WHEN BEST CAN BE BETTER, THAT'S WHEN YOU KNOW YOU HAVE ACHIEVED SOMETHING SPECIAL. WE'VE PUT TOGETHER ARCHITECTS WITH THE SAME VISION, PASSION AND FORESIGHT. EACH WITH THEIR UNIQUE LANGUAGE AND EXPERTISE. THE WORLD RENOWNED UNSTUDIO IN COLLABORATION WITH WELL-ESTABLISHED LOCAL ARCHITECT, a61 TO CREATE THIS MASTERPIECE.



© Inga Powilleit

“The architect will be concerned with dressing the future, speculating, anticipating coming events and holding up a mirror to the world.”

Ben van Berkel  
Co-founder and principal architect of UNStudio



“Collaboration with the world’s best designers can often bring about extraordinary architectural outcomes, given the right opportunity. The collaborative work with UNStudio is one such event.”

Michael Ngu  
CEO of a61

## UNSTUDIO

Founded in 1988 by Ben van Berkel and Caroline Bos, UNStudio has more than 20 years of international award-winning project experience. It has continually expanded its capabilities through prolonged collaboration with an extended network of international partners and advisors across the globe. This network has allowed UNStudio to work efficiently anywhere in the world.

UNStudio is committed to the promotion and practice of sustainable design. Environmental issues such as economic, social and ecological sustainability are considered with every design.

Today, their projects span the globe including the Mercedes-Benz Museum in Stuttgart, the large-scale Raffles City in Hangzhou and Theatre Agora in Lelystad.

## ARCHITECTS 61

With more than three decades of impressive track record, a61 is one of the most established architectural practices in Singapore. To date, it has over S\$20billion worth of completed projects in Singapore alone. Among the most recognisable landmarks include UOB Plaza, Fullerton Hotel, SGX Centre, Scotts Square, and the Coast at Sentosa. One of a61’s unique strengths lies in its very successful collaboration with well-known consultants like Kenzo Tange, Hugh Stubbins and I.M. Pei, who worked with a61 to complete the S\$738 million Raffles City.

a61 plays a primal role in shaping the skyline of the Marina Bay area, with outstanding projects such as One Raffles Quay, Fullerton Hotel, Asia Square Tower 1 and 2, Marina Bay Financial Centre, Marina Bay Suites and Bridge @ Marina Bay.



© Brigida Gonzalez  
UNStudio, Mercedes-Benz Museum, Stuttgart (DE) 2001–2006



© Christian Richters  
UNStudio, Theatre Agora, Lelystad (NL) 2002–2007



71 Robinson Road

OUR PHILOSOPHY A WAY OF LIFE.

FEW APPRECIATE THE ART OF LIVING LIKE WE DO. AS ARTISANS, WE ARE COMPELLED TO BE THE BEST. AND WE STOP AT NOTHING TO DOT SINGAPORE'S LANDSCAPE WITH TRULY MEMORABLE ICONS. THAT'S OUR VISION AND THE HALLMARK OF OUR UNCOMPROMISED PURSUIT OF PERFECTION.



Park Natura  
Artist's Impression



Grand Duchess  
Artist's Impression



One Amber  
Artist's Impression



The Trizon  
Artist's Impression



The Paterson  
Artist's Impression



The Archipelago  
Artist's Impression



Northwood  
Artist's Impression



Stevens Loft  
Artist's Impression



The Sixth Avenue  
Artist's Impression

## BUILDING PRESTIGE AND PRIDE

At United Industrial Corporation Limited (UIC), we believe buildings are more than a structure. It holds comfort, hope, inspirations and connects with its occupants on all levels.

UIC was incorporated in Singapore in 1963 as a private company, and listed as a public company in 1969. With the acquisition of the majority equity of Singapore Land Limited (SLL), the Group has transformed into a major real estate developer today.

Prestige and pride has always been the hallmark of our developments. As we are deeply connected to the transformation of Singapore as a financial and commercial hub, from early days to the present.

The Group has been known to develop and own some of Singapore's finest and best known commercial landmarks including SGX Centre, Singapore Land Tower and Clifford Centre in the heart of Singapore's financial district.

Other outstanding landmarks include The Gateway, designed by a renowned architect, I.M.Pei, which has been described as 'world class architecture'. In the fast-paced retail industry, the Group has also proven itself to be in the forefront with highly successful developments such as Marina Square, West Mall and Novena Square.

Our uncompromised focus on impeccable standards is also clearly visible in condominium developments such as The Paterson, Stevens Loft, One Amber, Grand Duchess, The Sixth Avenue Residences, The Trizon and The Archipelago. Another two new developments are currently being planned in the exclusive enclave of Jervois at Bishopsgate and Farrer Drive at Holland Road vicinity.





**United Industrial Corporation Limited**  
24 Raffles Place, #22-01/06,  
Clifford Centre, Singapore 048621  
Tel: (65) 6220 1352  
Fax: (65) 6224 0278  
Email: residential@uic.com.sg

For enquiries  
**6298 0550**  
[www.v-on-shenton.com.sg](http://www.v-on-shenton.com.sg)

Developer – UIC Investments (Properties) Pte Ltd (Co. Reg. No. – 198700217C) · Developer's License No. – C0911 · Tenure of Land – 99 years wef 29 November 2011 · Location – Lot 00080T TS 30 at 5 Shenton Way · Expected Date of Vacant Possession – 31 December 2017 · Expected Date of Legal Completion – 31 December 2020

Whilst every care has been taken in the preparation of this brochure and the plans attached, the Developer and its agents shall not be held responsible for any inaccuracies and omissions therein. All visual representations including architectural models, drawings, illustrations, photographs, renderings and other graphic representations portray artist's impressions only and not to be relied upon as statements or representation of facts. All floor areas are approximate measurements only and are subject to final survey. The materials and finishings to be used are subject to changes and availability. All information and specifications are current at the time of publication and are subject to change as may be required and do not form part of an offer or contract. The Sale & Purchase Agreement shall form the entire agreement between the developer and the purchaser, and shall in no way be modified by any statements or representations whether contained in this brochure or given by the developer's agents or otherwise.

