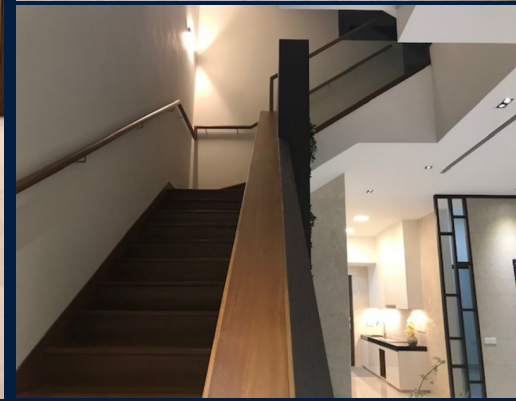


# FOR SALE

## RESIDENTIAL - SEMI-DETACHED HOUSE 2,800SQFT (260SQM) / S\$7,630,000

+65-92478880



### RESIDENTIAL - SEMI-DETACHED HOUSE

HONG KONG PARK, 10, STONE AVENUE, CLEMENTI PARK, UPPER BUKIT TIMAH, SINGAPORE 588232

- LISTING ID: SGLA01752303
- TENURE: LEASEHOLD 999
- TITLE: N/A
- SIZE BUILT-UP: 2,800SQFT (260SQM)
- SIZE LAND: N/A
- NO. OF FLOORS: N/A
- FLOOR/LEVEL: N/A - N/A
- BED ROOMS: 6
- BATH ROOMS: 6
- MAIDS ROOMS: N/A
- PARKING SPACES: N/A
- LAYOUT TYPE: N/A
- FACING: N/A
- VIEWING: PARK / GREENERY VIEW
- SELLING PRICE: S\$7,630,000 **NEGOTIABLE**  
2,725PSF (29,331PSM)
- COMPLETION YEAR: N/A
- CONDITION: N/A
- FURNISHING: N/A
- LISTING DATE: AUG 16, 2019

### SEMI-DETACHED HOUSE STONE AVENUE

Spacious 2,800sqft (260sqm), 6 bedroom, 6 bathroom Semi-Detached House for Sale. This unit. Others: leasehold 999, park / greenery view Located in Singapore's district D21 near Clementi Park, Upper Bukit Timah in the area Central West (Central region).

#### INTERIOR AND FEATURES

- Air-Conditioning
- Balcony

#### FACILITIES

- Fridge
- Oven / Microwave

VISIT THIS PROPERTY AT: <https://www.matthewleoproperties.com/property/sgla01752303>



### MATTHEW LEO - HUTTONS ASIA PTE LTD

3 Bishan Place #05-01 CPF Bishan Building  
D20, 579838, Singapore

+65-92478880  
WhatsApp Me

leo@matthewleoproperties.com

<https://www.matthewleoproperties.com>

L3008899K  
R030454B



Scan QR Code

**Huttons**® Call for Viewing  
The Agency of Choice +65-92478880