

CHEWATHAI  
RESIDENCE

---

THONGLOR

---

MAXIMIZE COMFORT  
IN URBAN LIVING  
LIVE IN THE MODERN SANCTUARY



## AN URBAN OASIS

A serene hideaway in the heart of Thonglor, where tranquility and greenery shield you from hectic city noise and woes, and where you can truly embrace peaceful atmosphere and modern green living concurrently, all within the additional privacy meticulously conceived at Chewathai Residence Thonglor.

You can choose to enjoy what Sukhumvit has to offer or simply choose to unwind and find your own solitude. This is one-of-a-kind location in the city, where you can embrace the best of both worlds.



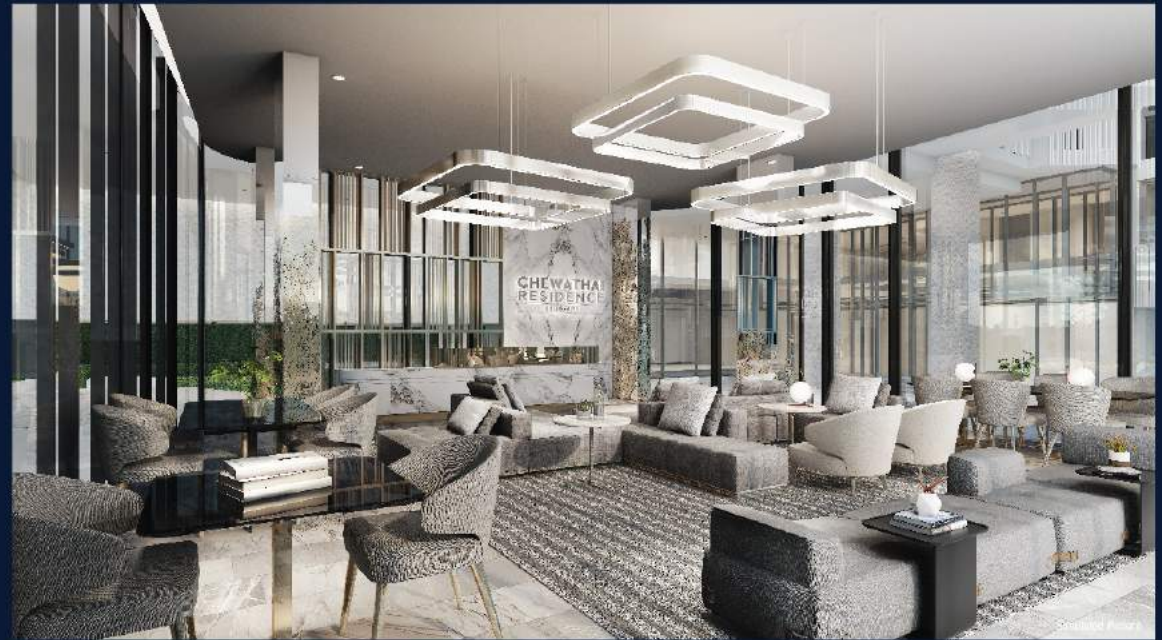


## LIVE THE MODERN URBAN SANCTUARY

**The synthesis of modern design and nature is simply found** in the elegant fusion of convenience and refinement. Within the exterior design, modern white architecture with trees adorning each balcony redefines a whole new boundary with nature. The living space is carefully conceived, and the environment has been carefully conserved to thrive within the highest standards of architecture. You will have everything you need to live your life to the fullest in the heart of the city.

# PRECIOUS & PRIVACY

One of a kind. Experience a privileged lifestyle enhanced with unsurpassed luxury yet pragmatic in every aspect. Conscientious efforts have been made to ensure space and room planning coalesce tastefully and harmoniously, culminating space to its fullest potential but still prevailing the highest level of privacy, particularly units on the ground floor which have swimming pool access, as well as the elegant lobby lounge and surrounding hallways which are meticulously adorned with vertical gardens that gracefully bring nature into closed walls.

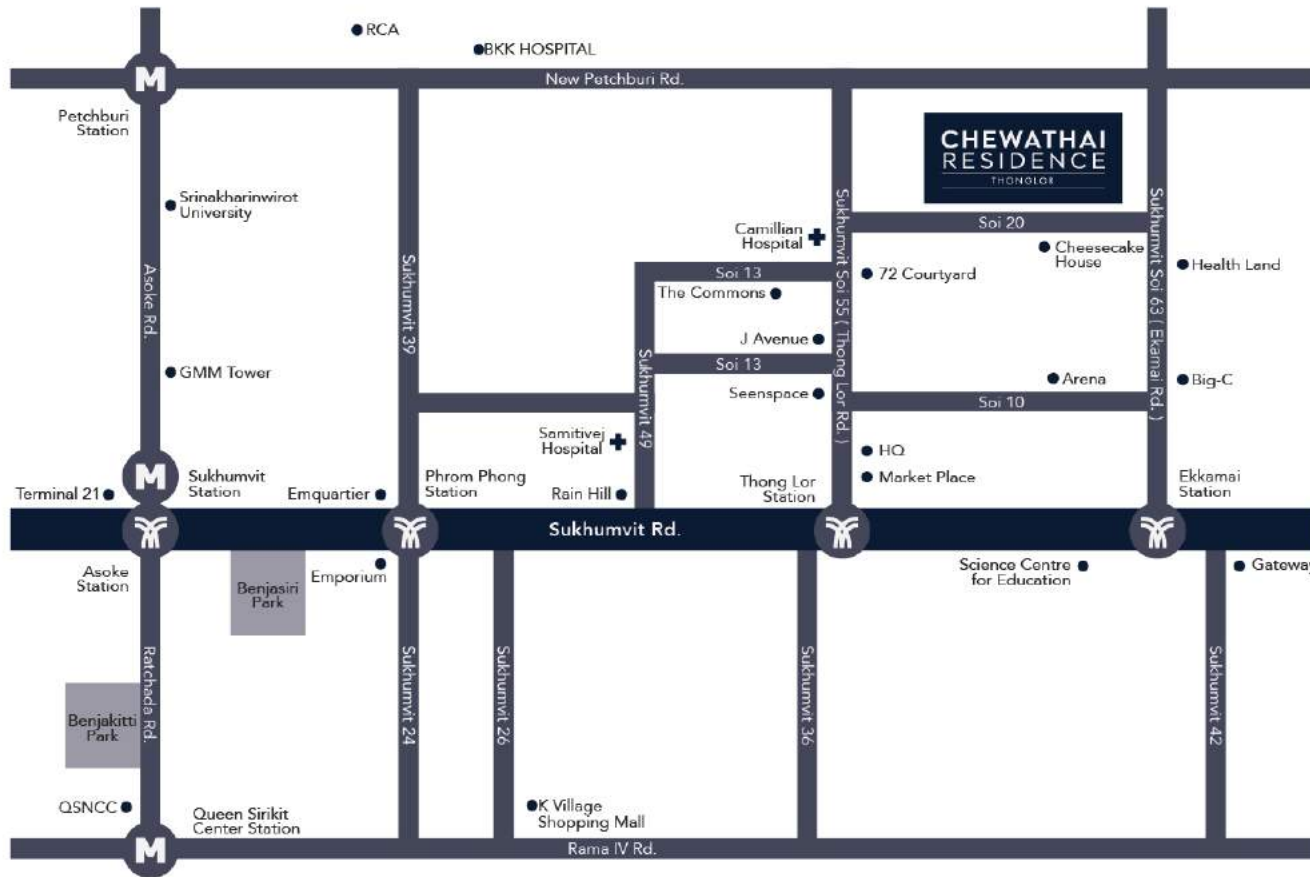




## WHERE LIFE FINDS THE RIGHT BALANCE

Life will find its right balance, in the most congenial atmosphere, when one is pampered with amenities including lobby lounge, co-working space, and salt water swimming pool with chlorinator pool system, fully equipped fitness center, vertical garden style lobby, roof top garden & sundeck. Green space allows you to feel nature closer, while concierge service and security systems operating 24 hours bring reassurance and comfort to complete your city life.





## PRIME URBAN CONNECTED

Be in the vicinity of the lifestyle you desire, and live your life in every single aspect of a true metropolitan.

A stone's throw from a myriad of cafes and restaurants, and easy access to shopping centers and top tier schools.

Thonglor 20 strategically connects Thonglor, Ekkamai, New Petchaburi and Rama IX roads, adding convenience and flexibility in city life.

Camillian Hospital	500 M.	Ekkamai International School	1.8 KM.
Thong Lor Police Station	650 M.	Bangkok Hospital	2 KM.
Singapore International School of Bangkok	900 M.	Major Ekkamai	2.7 KM.
J avenue	950 M.	Gateway Ekkamai	3.9 KM.





# FLOOR PLAN

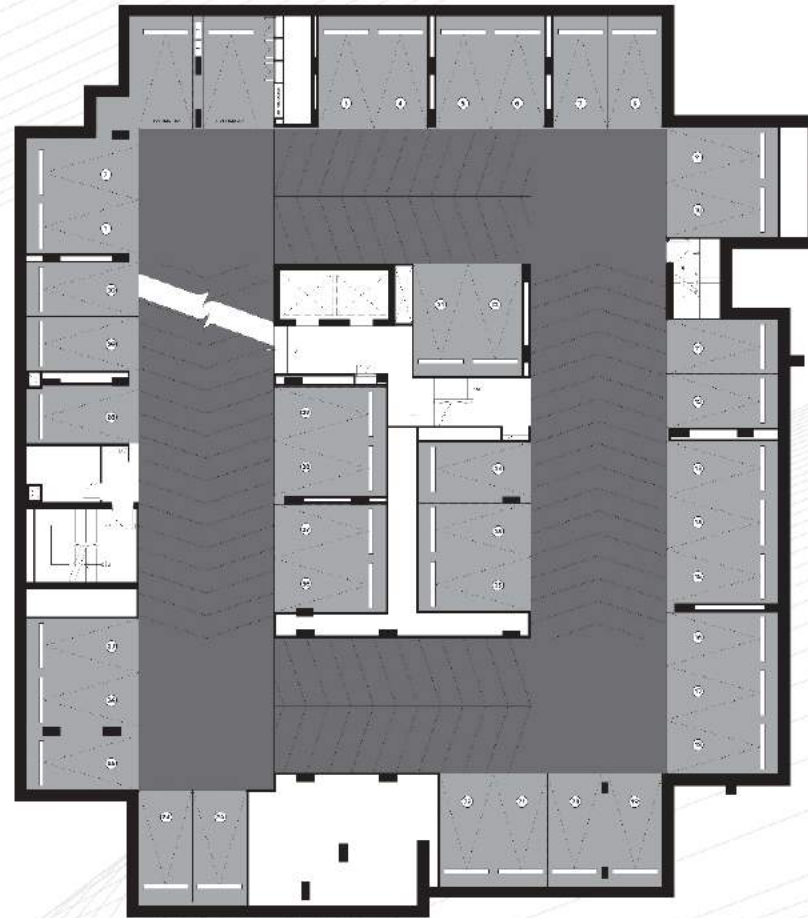
# B2 FLOOR



\*All images in this document. The image is for advertising purposes. \*\*terms and conditions may apply

# FLOOR PLAN

# BI FLOOR



\*All images in this document. The image is for advertising purposes. \*\*terms and conditions may apply

# FLOOR PLAN

# 1ST FLOOR

- 1 BEDROOM
- 1 BEDROOM PLUS
- 2 BEDROOM



\*All images in this document. The image is for advertising purposes. \*\*terms and conditions may apply

# FLOOR PLAN

# 2ND FLOOR

- 1 BEDROOM
- 1 BEDROOM PLUS
- 2 BEDROOM



\*All images in this document. The image is for advertising purposes. \*\*terms and conditions may apply

# FLOOR PLAN

# 3RD FLOOR

- 1 BEDROOM
- 1 BEDROOM PLUS
- 2 BEDROOM



\*All images in this document. The image is for advertising purposes. \*\*terms and conditions may apply

# FLOOR PLAN

# 4TH FLOOR

- 1 BEDROOM
- 1 BEDROOM PLUS
- 2 BEDROOM



\*All images in this document. The image is for advertising purposes. \*\*terms and conditions may apply

# FLOOR PLAN

# 5TH FLOOR

- 1 BEDROOM
- 1 BEDROOM PLUS
- 2 BEDROOM



\*All images in this document. The image is for advertising purposes. \*\*terms and conditions may apply

# FLOOR PLAN

# 6TH FLOOR

- 1 BEDROOM
- 1 BEDROOM PLUS
- 2 BEDROOM



\*All images in this document. The image is for advertising purposes. \*\*terms and conditions may apply



# FLOOR PLAN

# 7TH FLOOR

- 1 BEDROOM
- 1 BEDROOM PLUS
- 2 BEDROOM



\*All images in this document. The image is for advertising purposes. \*\*terms and conditions may apply

# FLOOR PLAN

# 8TH FLOOR

- 1 BEDROOM
- 1 BEDROOM PLUS
- 2 BEDROOM



\*All images in this document. The image is for advertising purposes. \*\*terms and conditions may apply

# FLOOR PLAN

# 9TH FLOOR



\*All images in this document. The image is for advertising purposes. \*\*terms and conditions may apply

# ROOM LAYOUT

ONE BEDROOM

# TYPE B-I-E

30.04 Sq.m.



*Key Plan  
4, 6, 8 Floor*



\*All images in this document. The image is for advertising purposes. \*\*terms and conditions may apply

# ROOM LAYOUT

ONE BEDROOM

# TYPE B-5-E

38.41 Sq.m.



*Key Plan*  
*4, 6, 8 Floor*



\*All images in this document. The image is for advertising purposes. \*\*terms and conditions may apply

# ROOM LAYOUT

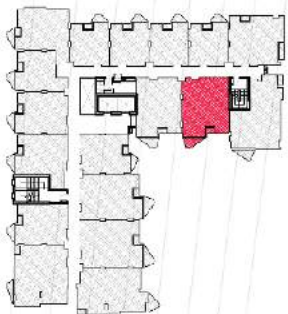
ONE BEDROOM PLUS

# TYPE 2B-4-E

48.39 Sq.m.



*Key Plan*  
*2, 4, 6, 8 Floor*



\*All images in this document. The image is for advertising purposes. \*\*terms and conditions may apply

# ROOM LAYOUT

TWO BEDROOM

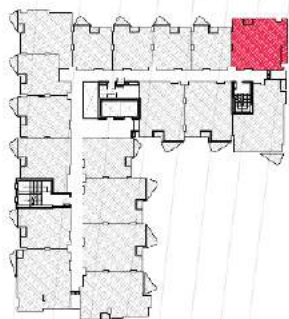
# TYPE 2B-2

43.33 Sq.m.



*Key Plan*

*2, 3, 4, 5, 6, 7, 8 Floor*



# ROOM LAYOUT

TWO BEDROOM

# TYPE 2B-8-O

61.33 Sq.m.



*Key Plan  
3, 5 Floor*



\*All images in this document. The image is for advertising purposes. \*\*terms and conditions may apply



# CHEWATHAI RESIDENCE

THONGLOR

Chewathai Residence Thonglor: The Project Owner: Chewathai Public Company Limited Registered Capital: 2,307,692,307.- (paid up 1,275,027,183.-). Address: 1168/80 Lumpini Tower, 27th Floor, Rama IV Road, Tungmahamek, Sathorn, Bangkok 10120 Thailand. Chairman of The Board of Directors: Mr.Chartchai Panichewa. The project will be constructed as a residential condominium with 8 stories height and 2 story Basement, approximately 130 units. The project located at Soi Thonglor 20, Sukhumvit 55, Khlong Tan Nuea, Watthana, Bangkok, Thailand. The land title deed no.36334 and 2068, Survey page no. 6336Khlong Tan Nuea, Watthana, Bangkok. Covering approximately the area of 1-0-94 Rai. The title deeds have been mortgaged with Bank of Ayudhya Public Company Limited. The construction will be started in November 2018 and expected to be completed in March 2020. The project will be registered as the condominium after the construction is completed. The terms and conditions of paying common property expenses at the rate as stipulated by the project owner or condominium juristic person.

